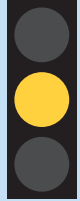


# Denmark

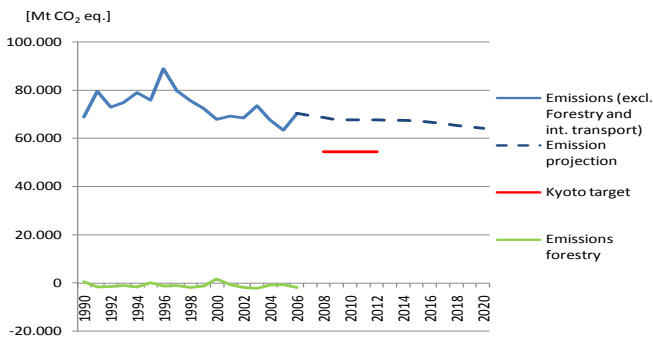
## SUMMARY EVALUATION

- » One of the highest per capita emissions among EU countries
- » Energy consumption has grown every year since 2002 and CO2 emissions are also rising
- » Domestic emissions are currently far above the Kyoto target, suggesting that a large part of the target will have to be met through EU emissions trading and JI/CDM effect
- » Agreed to EU 20/30% reduction target by 2020, but so far no national climate plan is in place to ensure that sectors outside the EU emissions Trading Scheme reduce emissions in accordance to the targets.



## EMISSIONS AND ENERGY

### EMISSION TREND



Past emission trend from 1990 to 2006\* +2,1 % ●

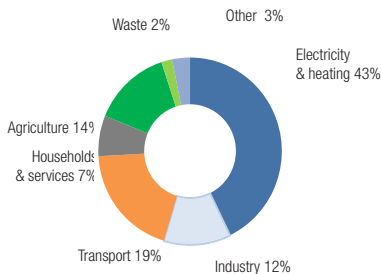
Current distance to the Kyoto target +23 %-points ●

Increase of the share of renewable energy sources\*\* 8 % ●

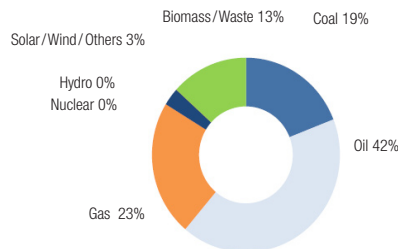
Emissions per capita 13 tCO<sub>2</sub>eq./cap ●

Emissions per GDP 254 CO<sub>2</sub>eq./M\$ ●

### EMISSIONS BY SECTOR



### ENERGY SOURCES



CO<sub>2</sub> per kWh electricity\*\*\* 539 gCO<sub>2</sub>/kWh ●

Energy efficiency in industry\*\*\*\* 2.3 ●

Emissions in transport per capita 2,5 tCO<sub>2</sub>eq./cap ●

Emissions in households and services per capita 1.0 tCO<sub>2</sub>eq./cap ●

CONTACT: John Nordbo, Climate Change Programme Leader, WWF Denmark  
Phone: +45 35 24 78 53 Email: j.nordbo@wwf.dk

Notes: Numbers are based on figures from Danish National Inventory Report 2008. The projections are taken from: Projection of Greenhouse gases 2005-2030. NERI Technical Report no. 611. 2007.

\*Due to the changes of the import of energy from abroad Denmark's GHG emissions fluctuate yearly. In 2005 Denmark experienced a negative growth rate in CO2 emissions.  
\*\*Based on figures from the Danish Energy Agency\*\*\*Based on figures from Danish Energy Agency\*\*\*\* Based solely on the figure from iron and steel industry, the only comparable number available.

# Denmark

## CLIMATE POLICIES

### GENERAL

- » Ratified UNFCCC on 21.12.1993 & ratified the Kyoto Protocol on 31.05.2002
- » Supports the assertion that global temperature should be kept below 2 degrees
- » Has no short, medium or long-term national emissions targets, but has a vision to make Denmark 100% independent of fossil fuels at a future date
- » Agrees to EU targets for 2020: unilaterally reduce GHG emissions to 20% below 1990 levels and 30% if other countries commit to similar efforts, increase renewables to a 20% share.
- » Recently decided to lift a 10-year old 'coal stop' to make way for the use of coal at power plants currently supplied by natural gas
- » Recently decided to increase support for renewables, and accepts to increase the share of renewable energy from 17% in 2005 to 30% in order to contribute to EU's 2020 target.

### ELECTRICITY/ NUCLEAR

- Participation in the EU Emissions Trading Scheme; stringent allocation for 2008-12. Commitment by grid operators to increase energy efficiency in industry and households. The high dependency on coal for electricity production is expected to rise due to the abandonment of the 'coal stop' policy. This will allow energy companies to shift to coal on power plants currently supplied by natural gas. No plans to build nuclear power stations.

### INDUSTRY

- Part of industry is covered by the EU Emissions trading Scheme; moderate allocation for 2008-12. CO2 tax scheme providing tax credits to companies which agree to implement energy saving measures.

### HOUSEHOLDS AND SERVICES

- CO2 tax on services. High CO2/energy taxes on households. Strict energy consumption standards for new buildings will be tightened in 2010/15/20; weak standards for renovation of existing buildings; compulsory energy labeling scheme for buildings in place.

### TRANSPORT

- CO2 emissions are out of control. The car tax is high and mainly based on value, but also partly related to energy efficiency. Electric cars are temporarily exempted from the car tax. The yearly car owner tax is based on energy efficiency. Cities are not allowed to establish road toll schemes.

### RENEWABLES

- Subsidies for renewables are in place, especially biomass, wind, and biogas. State has contracts with companies building and operating off shore wind mills. Large wind farms will be built in the coming years. The plan is to increase the share of renewable energy from 17% in 2005 to 30% in order to contribute to EU's 2020 target.